

DC TACHOMETER-GENERATORS

The model 750 DC Tachometer-Generator embodies a permanent magnet field surrounding a rotating armature. The commutator segments are made from a special non-corrosive alloy which has an exceptionally long life. The brushes are of a self-lubricating material and are carried in a self-aligning holder which equalizes the pres-

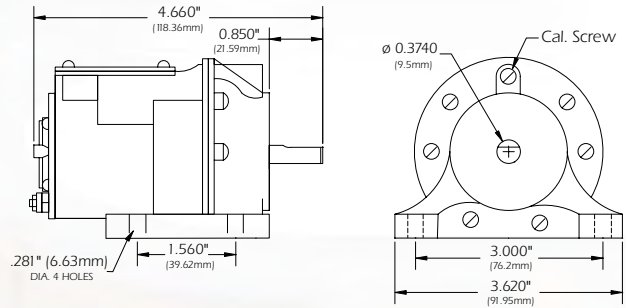
BASE MOUNTING

MODEL 750, TYPE A



Base Mounting Model 750
Type A

Catalog No.
750-9901000



- Rigid die-cast aluminum housing
- Base mounted tachometer
- $\frac{3}{8}$ " drive shaft for direct coupling to a pulley or a spur gear
- 1.0 oz-in torque

SCREW MOUNTING

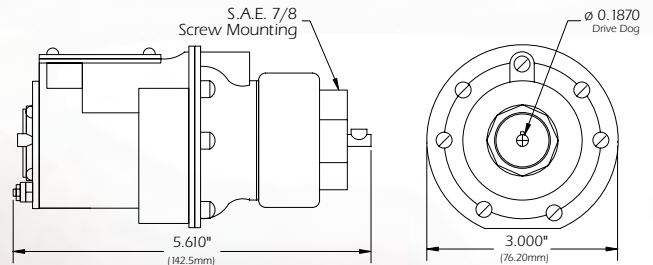
MODEL 750, TYPE J2



Screw Mounting Model 750

Catalog No.

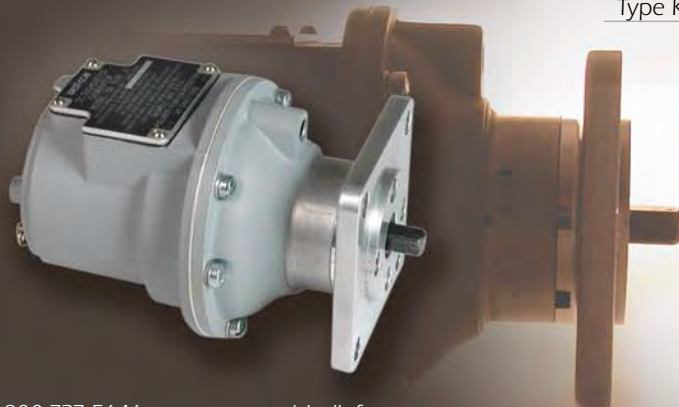
Type J2		750-9906000
Type M2	Same as J2 except reduced torque to 1.0 oz-in	750-9906001
Type J2R	Same as J2 except internal resistance is 200 ohms	750-9906002



- $\frac{3}{16}$ " spring drive shaft
- Standard S.A.E. $\frac{7}{8}$ " screw type mounting
- 3.0 oz-in starting torque
- Mainly used on Diesel and Gas engines

PAD MOUNTING

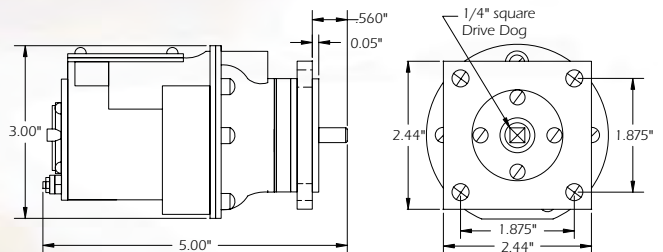
MODEL 750, TYPE K3



Pad Mounting Model 750

Catalog No.

Type K3		750-9903000
Type K30	Same as the K3 but with a $\frac{3}{16}$ " drive shaft	750-9905000



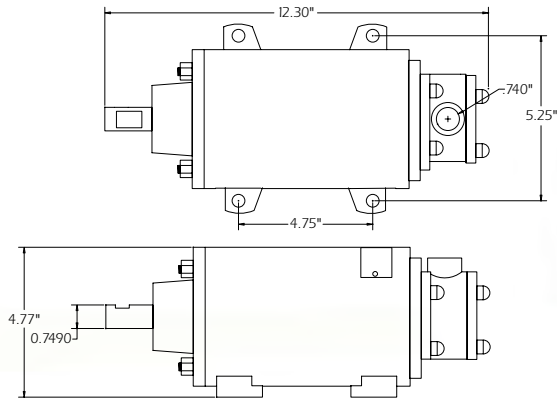
- Square Pad Mounting
- $\frac{1}{4}$ " square drive shaft
- 3.0 oz-in starting torque

sure of both brushes. The armature shaft rotates on ball bearings which under normal operation do not need lubrication for 15,000 hours running time or approximately 3 years, whichever comes first. Maximum recommended speed is 5,000 rpm. Brush life is greatest at the lower speeds.

SPLASH-PROOF MODEL 750, TYPE W

Splash-Proof Model 750
Type W

Catalog No.
750-9905002

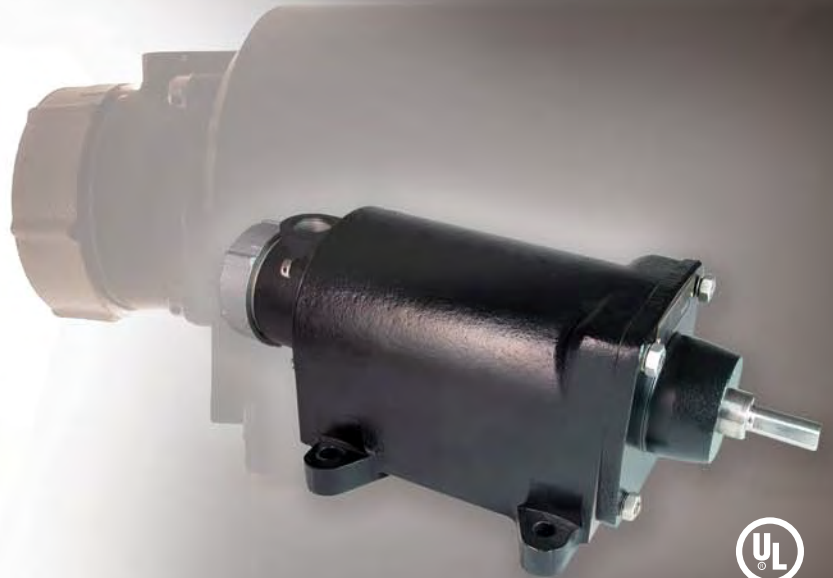
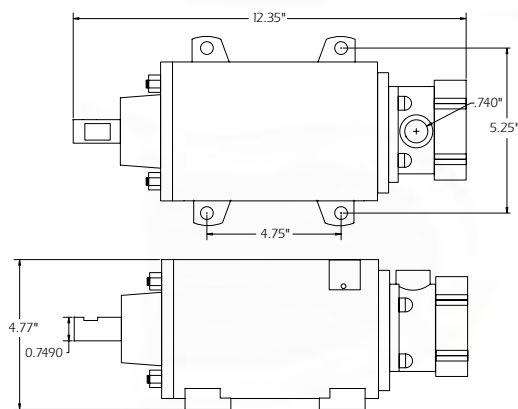


- Heavy-duty cast iron housing
- Sealed for water wash down area's
- Base mounted tachometer
- 1/2 NPT conduit junction box included
- 3/4" Diameter drive shaft supported by heavy duty ball bearings
- 2.0 oz-in starting torque

EXPLOSION-PROOF MODEL 750, TYPE E

Explosion-Proof Model 750
Type E

Catalog No.
750-9905001



- Heavy-duty cast iron housing
- UL Listed for Hazardous Locations Division 1, Class 1, Group D and Class 2, Groups F and G
- Base mounted tachometer
- 1/2 NPT conduit junction box included
- 3/4" Diameter drive shaft supported by heavy duty ball bearings
- 2.0 oz-in starting torque



Note: In order to maintain UL Listing on the Type "E", all service and repair Must be done at the factory.

AC TACHOMETER-GENERATORS

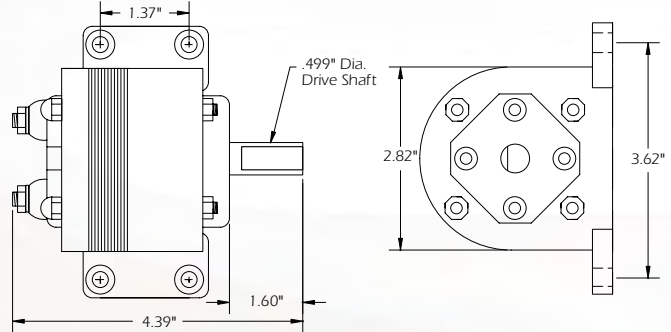
The 758 Series of tachometers are used in low maintenance application requirements. The 758 model embodies a stator surrounding a rotating ALNICO permanent magnet. The output of the generator for voltage responsive systems is temperature compensated and is proportional to the speed. The ball bearings need not be lubricated

BASE MOUNTING

MODEL 758, TYPE AB



Base Mounting Model 758	Catalog No.
Type AB	750-9901000
Type ABF Same as the AB but Frequency Responsive System	758-9901001



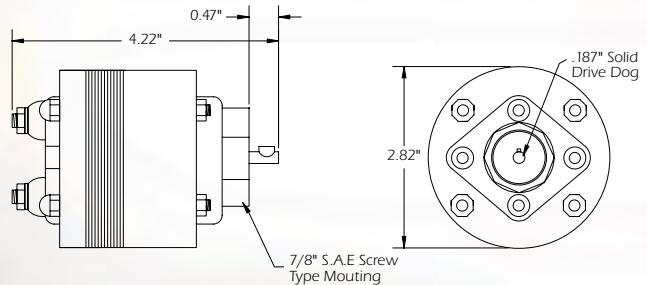
- 1/2" diameter drive shaft
- Base mounted configuration
- 2.5 oz-in starting torque

SCREW MOUNTING

MODEL 758, TYPE JB2



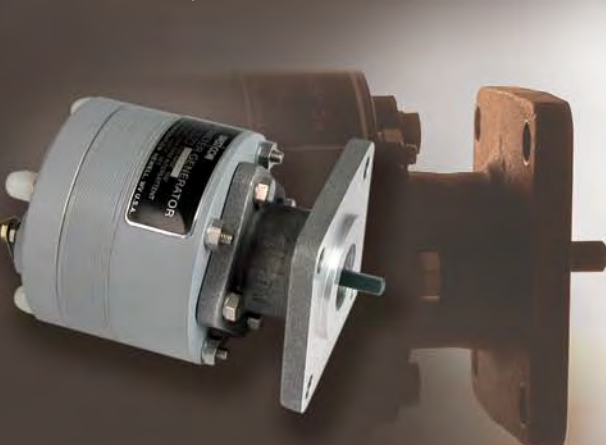
Screw Mounting Model 758	Catalog No.
Type JB2	758-9905000
Type JBF2 Same as JB2 except frequency responsive output	0133477-902
Type JB5 Same as JB2 except has additional cover box	758-9905001



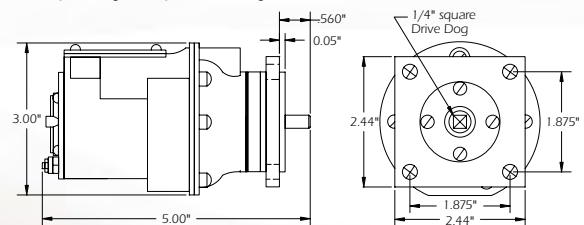
- Standard 7/8" S.A.E. screw type mounting
- 3/16" Drive Dog Shaft
- 2.0 oz-in starting torque

PAD MOUNTING (AN)

MODEL 758, TYPE KB3



Pad Mounting Model 758	Catalog No.
Type KB3 For Voltage-Responsive Systems	758-9907000
Type KBF3 For Frequency-Responsive Systems	758-9911000
Type KB6 For Voltage-Responsive Systems	758-9908000
Type KBF6 For Frequency-Responsive Systems	136522-902
Type KB30 For Voltage-Responsive Systems	134277-901
Type KBF30 For Frequency-Responsive Systems	134277-903

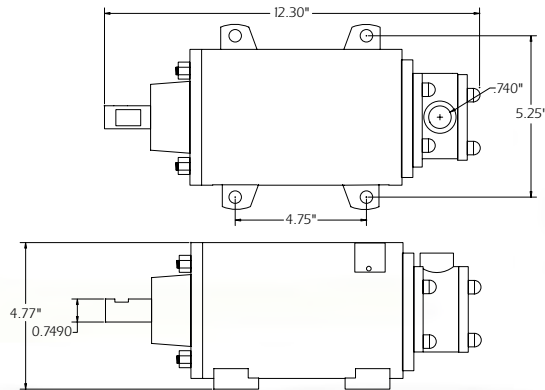


- Square aluminum mounting pad
- 1/4" square drive dog shaft
- 2.0 oz-in starting torque

under normal operation for 15,000 hours running time or approximately three years, whichever comes first. Maximum recommended speed is 5,000 rpm, but may be used up to 10,000 rpms under special conditions.

SPLASH-PROOF MODEL 758, TYPE W

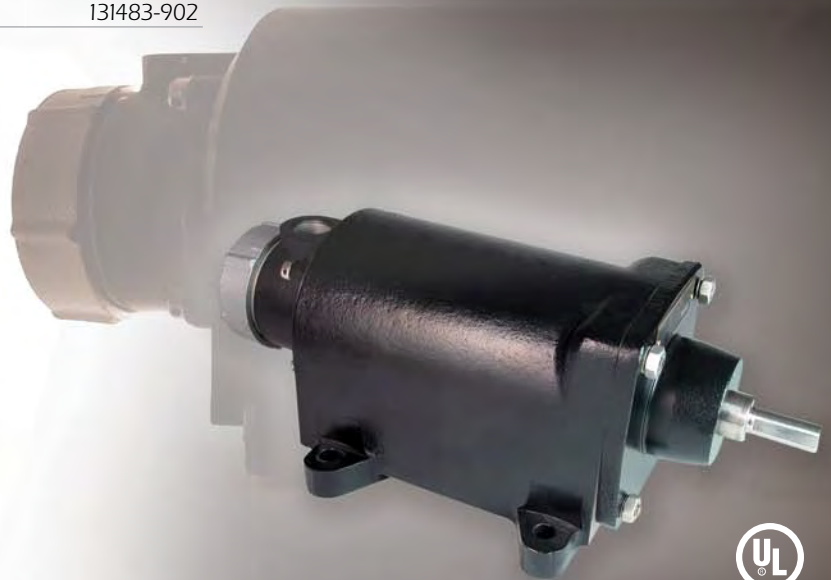
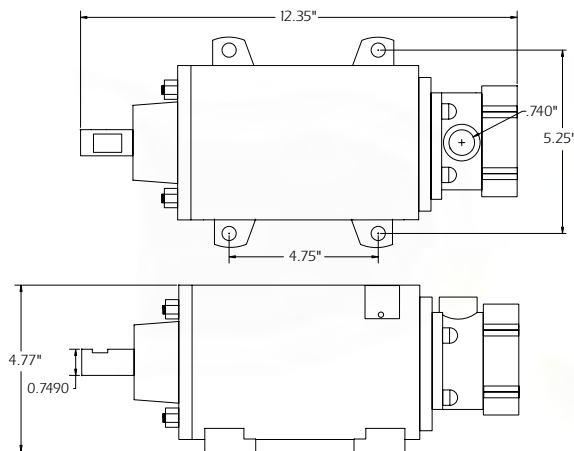
Splash-Proof Model 758		Catalog No.
Type W	For Voltage-Responsive Systems	750-9905002
Type WF	For Frequency-Responsive Systems	133484-902



- Heavy-duty cast-iron base-mounting type housing
- 3/4" diameter drive shaft supported by heavy duty ball bearings
- Conduit junction box with 1/2 NPT opening
- Designed for locations which are subject to mechanical abuse or water spray
- 3.0 oz-in starting torque

EXPLOSION-PROOF MODEL 758, TYPE E

Explosion-Proof Model 758		Catalog No.
Type E	For Voltage-Responsive Systems	758-9910001
Type EF	For Frequency-Responsive Systems	131483-902



- Heavy-duty cast-iron base-mounting type housing
- 3/4" diameter drive shaft supported by heavy duty ball bearings
- Conduit junction box with 1/2 NPT opening
- UL Listed for Hazardous Locations Division 1, Class 1, Group D and Class 2, Groups F and G
- 3.0 oz-in starting torque



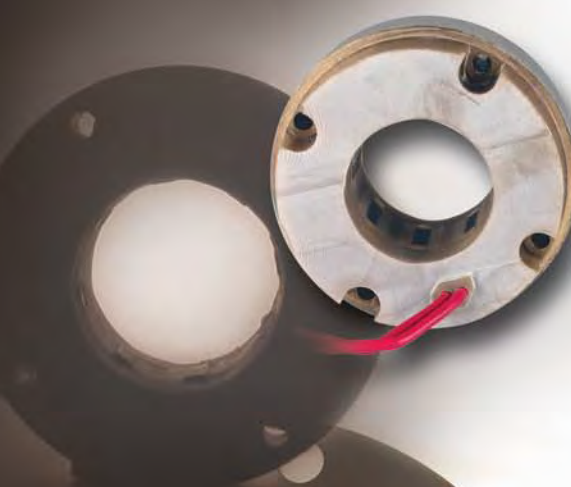
Note: In order to maintain UL Listing on the Type "E", all service and repair Must be done at the factory.

BEARINGLESS AC GENERATORS

"Potted" Models. Units are available with the stator windings encapsulated with an epoxy material for greater protection. These are designed with the letter "P" in the type number

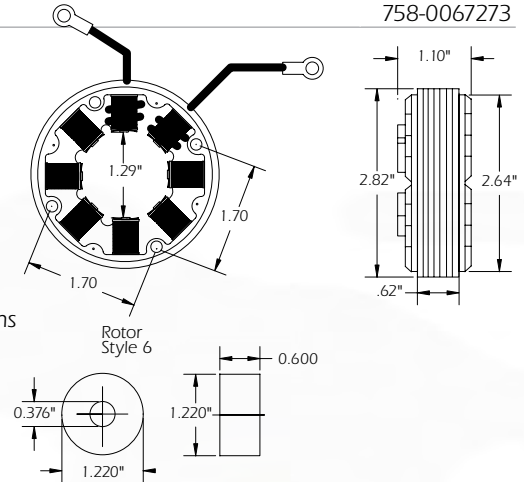
TYPE XF86

MODEL 758



Model 758	Catalog No.
Type XF86	758-9989002
Type XPF86	758-0077533
Type XF44	758-0088466
Type XPF44	758-0067273

- Rotor Style 6
- 500-20,000 RPMs
- No Housing
- Stator Resistance 32 ohms



TYPE GF86

MODEL 758



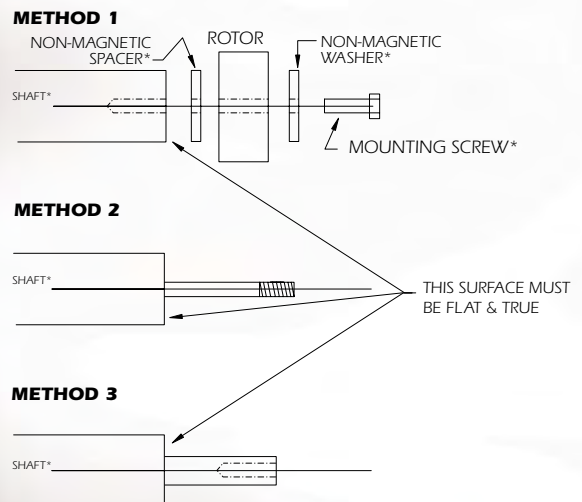
Model 758	Catalog No.
Type GF86	758-9912002
Type GPF86	758-0300008
Type GF44	758-0049982
Type GPF44	758-0084866

- Rotor Style 6
- 500-20,000 RPMs
- Cast Iron Housing
- Stator Resistance 32 ohms

ROTOR INSTALLATION

The rotor of the generator unit should be mounted to the true center of the shaft with extreme care, particularly in higher speed applications. The relatively small inertia of the rotor makes it possible to secure it to the shaft with a right hand thread regardless of the direction of rotation. It is recommended that a steel screw having an SAE thread be used to permit maximum tightening.

NOTE: DO NOT press fit the rotor to the shaft, or the rotor will shatter because of the brittle nature of the magnetic rotor material.



* SUPPLIED BY CUSTOMER

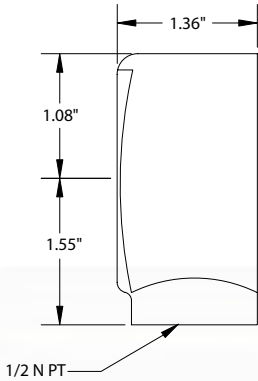
ACCESSORIES

BINDING POST CONDUIT BOX

Model 750
Types J2, J2R, M2 and K3

Catalog No.
9933-0143156

MODEL 750
TYPES J2, J2R, M2 AND K3



Provides protection for the terminals, and has a 1/2 NPT connection for conduit.

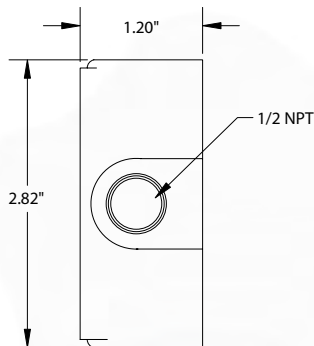


BINDING POST CONDUIT BOX

Model 758
Types AB, JB2 and KB3

Catalog No.
9933-0143157

MODEL 758
TYPES AB, JB2 AND KB3



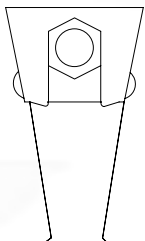
- Provides protection for terminals, and has a 1/2 NPT connection for conduit



REPLACEMENT BRUSH KIT

Use with all Model 750 Tachometers

Catalog No.
249302-901



Metallic leaf brushes are of an alloy which will wear before the commutator bars. Brush replacement is a simple field operation.



IMPORTANT NOTICE

Our recommendations, if any, for the use of this product are based on tests believed to be reliable. The greatest care is exercised in the selection of our raw materials and in our manufacturing operations. However, since the use of this product is beyond the control of the manufacturer, no guarantee or warranty, express or implied is made as to such use or effects incidental to such use, handling or possession or the results to be obtained, whether in accordance with the directions or claimed so to be. The manufacturer expressly disclaims responsibility therefore. Furthermore, nothing contained herein shall be construed as a recommendation to use any product in conflict with existing laws and/or patents covering any material or use.

MARSH BELLOFRAM®
Group of Companies

8019 Ohio River Blvd., Newell, WV 26050

800.727.5646

www.marshbellofram.com

LTATC0810 2K 3-09